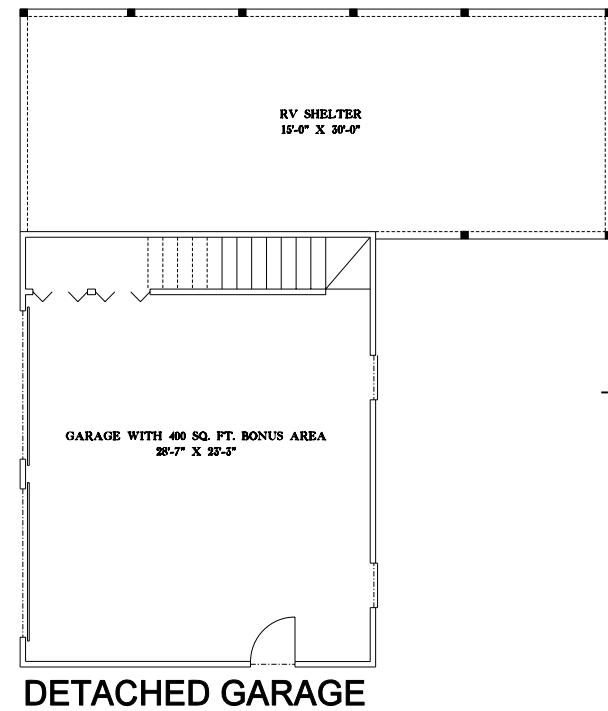
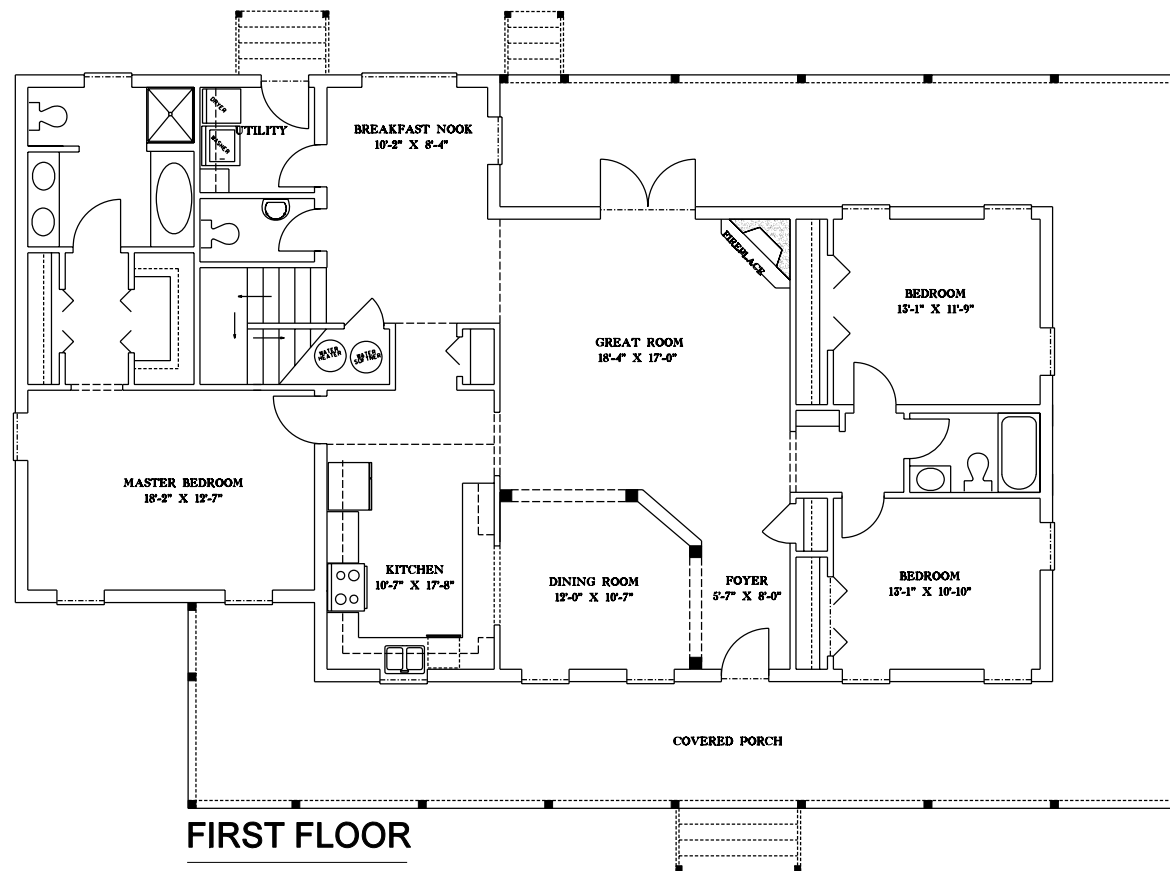


Another Exquisite Home by Timberland Estates



*Dreams
Meet
Reality*



SOUTHERN COMFORT

4 BEDROOMS, 3 1/2 BATHS, FIREPLACE, AND 2 CAR GARAGE WITH RV PARK

HEATED AND COOLED SQ. FTGS	2,860 SF
PORCHES SQ. FTGS.	1,180 SF
GARAGE & RV PARK	1,305 SF
TOTAL SQ FTGS	5,345 SF

